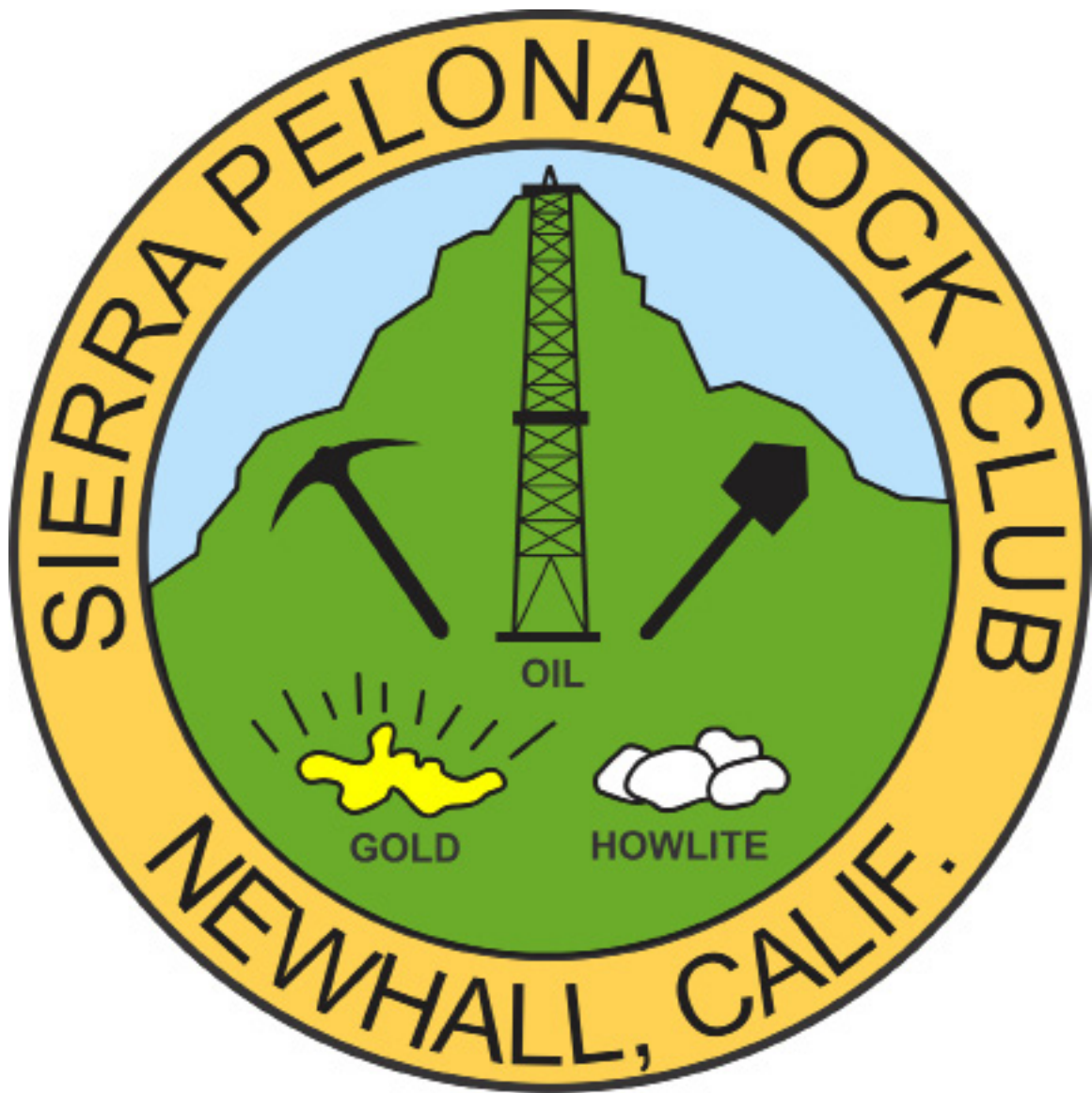


The Sierra Pelonagram



February 2026

... Member of the California Federation of Mineralogical Society Inc. ...

The Sierra Pelona Rock Club is a non-profit organization founded in 1959 with the objective to sponsor activities and promote interest and education in: mineralogy, lapidary, geology, paleontology and related subjects.

Sierra Pelona Rock Club

Board Meeting
February 3, 2026
Via Zoom

The meeting was called to order at 7:10pm. In attendance were Julie Tinoco, Ed Learn and Heidi Webber. Absent were Tina White and Greg Mazourek. A quorum was met.

Julie was in charge for Tina who was out of the country.

Ed gave his treasurer's report. All is well, but some dues are still due. Heidi said she would contact those members to remind them.

Old Business: The decision has been made to continue to meet at the bowling alley until we can get back into the clubhouse from repairs being made due to the flooding. Members will be asked to buy pizza or burgers or at least drinks to justify us taking the dining area of the bar. There is no charge to us as long as we utilize the snack bar. Feedback from members who attended the January meeting there was overall very good, except for the noise until the doors were closed.

New Business: Julie said the February field trip on either the 21st or 22nd will be to the claim for a quick cleanup and then collecting from the claim and in the area. We discussed doing this on a Sunday as Saturdays can be difficult for some members who would like to attend but have other obligations. She'll take a show of hands at the General Meeting February 17.

Membership: Heidi motioned that the board vote into membership 5 persons. Kim Brosnan--Ed seconded/passed. Richard and Gabriel Jones--Julie seconded/passed. Gerald (Jerry) and Nancy Dougherty Julie seconded/passed. Welcome to the club!!!

It was decided our Spring Workshop will be held April 18 at Bill and Heidi's home. Details to follow.

Julie said the March field trip will be the Stoddard Wells Tailgate on Saturday March 14. This is always fun and they have a great collecting trip on Saturday morning. Julie will send out detailed emails in the upcoming weeks.

With no more discussion, Heidi motioned to adjourn. Julie/Ed. Meeting adjourned at 8:10pm.

Respectfully Submitted
Heidi Webber, SPRC Secretary



February

Jerry Dougherty
Gabriel Jones
Richard Jones
Brigitte Mazourek
Alan Polack
John Wheeler
Tina White

March

Nancy Dougherty
Ruth Hidalgo
Jo Dyer
Ed Learn
Maureen Thomas
Bill Webber

Officers:

President – Tina White
Vice-President – Julie Tinoco
Secretary: Heidi Webber
Treasurer –Ed Learn
Federation Director (CFMS/AFMS) --Greg Mazourek

Chairpersons:

Drawings--Josephine Casilang
Equipment--Bill Webber
Field Trips – Julie Tinoco
Historian -Open
Hospitality --Jaclyn Wright
Membership – Heidi Webber
Website-- Larry Holt
Pelonagram Publisher, Editor – Heidi Webber
Programs –Tina White
Publicity –Merritt Kent
Sunshine--Yolanda Resnick

The Sierra Pelona Rock Club, is a member of the California and American Federation of Mineralogical Societies, Inc. (CFMS/AFMS). The general club meetings (Open to the public) are at 7:00 PM, on the 3rd Tuesday of each month at

**The Clubhouse of the
Greenbrier Mobile Estates EAST
21301 Soledad Canyon Rd
Canyon Country, CA 91351**

Contact the Club or the Sierra Pelonagram Editor at:
Sierra Pelona Rock Club
P.O. Box 221256
Newhall, Ca. 91322
Or e-mail: hwebber50@gmail.com
Visit the SPRC website www.sierrapelona.com



Greetings, Rockers!

I just spent time in the cooler-than-here Western Caribbean, surrounded by folks who were nonetheless happy to have escaped the freezing temperatures of their homes in the rest of the US & Canada. And while they didn't recognize it, the worst part of that snowy weather is that the snow COVERS UP THE ROCKS! Yet another reason to appreciate our lives here in SoCal.

Speaking of rocks, the SPRC is planning a February trip out to our Travertine Claim to get the area cleaned up for future visits by our group and others. And of course, collecting is encouraged! In March comes the Stoddard Wells Tailgate and Field Trip, and in April the Webbers will be hosting another Workshop. Details on all of those will be available as we get closer to those dates.

Meanwhile, our first off-site meeting at Santa Clarita Lanes went well. The venue was large (and surprisingly quiet) enough for what our meetings require, so we'll be back there

again until the Greenbrier Clubhouse is open again.

Remember, the Club purchased refreshments only for that first meeting, so please consider buying dinner, a snack, and/or a beverage of choice at our future meetings; we are using the space for free, so it's a good way to pay back their hospitality.

I hope to see you soon!

Tina White
SPRC President

Sierra Pelona Rock Club
General Meeting at Santa Clarita Lanes
January 20, 2026

The General Meeting was called to order at 7:04pm. There were 30 members and 7 guests in attendance. For the next few months, we will be meeting in the bar area at Santa Clarita Lanes Bowling Alley. There is a large dining area with access to screens for Tina to do her presentations. To commemorate this change in meeting accommodations, the board bought pizza and drinks for members and guests. Future meetings, we ask that you think about buying dinner or at least some drinks as we aren't charged for the room. Vincenzo's Pizza is the vendor and it is very good. There are also burgers and chicken, etc. available for very reasonable prices.

After the Pledge of Allegiance, Tina introduced the board had everyone introduce themselves for those guests and new members who may not know everyone. She also introduced the new chairpersons and their job for 2026. Dianne Wohlleben said that she needed someone to take the drawings as her replacement fell through. Josephine Casilang is now in charge. Thanks Josephine!

Ed Learn gave the treasurer's report.

Tina gave our newest members, Lori Kleban and her granddaughter Brynlee Eifert their membership packets.

Tina announced the passing of Frank Humelbaugh.

Tina also spoke about the wonderful collection of rocks donated to the club from a collector in Paso Robles.

Tina reminded everyone that 2026 dues are due.

Tina spoke about the great time had by some members of the club to the Natural History Museum Gem exhibit and encouraged those that hadn't been able to go, to do so as it is an amazing exhibit. (We were limited to 20 people).

Julie spoke about the Field Trip to the Barstow area on January 31, to Lavic Siding and Hector Road. There's loads of jasper and many other great pieces just lying on the ground (float), especially after the heavy rains.

The club moved their rocks and other supplies from its current home to Julie's shed (rocks and specimens) and papers and documents to Sandra Cattell's secure shed.

The meeting was adjourned at 7:34 for Tina's program on SCV Geology.

Respectfully Submitted
Heidi Webber, Secretary, SPRC

JANUARY 2026 FIELD TRIP TO LAVIC AREA

By Julie Tinoco

The field trip to the Lavic area on Saturday, January 31, 2026 was fantastic. We couldn't have asked for a better weather day! There were eight of us including new members, Gerald and Nancy.

The material that we found did not disappoint. We went to five different spots, saving the two with the most material for last. We snacked and had lunch throughout the day.

A hibernating turtle was seen in its borough while the group continued looking for beautiful rocks. The sun lowered a little in the afternoon so the group packed up and headed home. Once home five of us finalized the day with a delicious dinner at 661 Sushi.

Thanks to everyone who could join us.





MOST DEADLY MINERALS ON EARTH

Beautiful doesn't always mean harmless.

Some of the world's most stunning minerals are also extremely toxic, radioactive, or lethal if mishandled.

1. Cinnabar (HgS)

Primary ore of mercury. Long-term exposure can cause severe neurological damage.

2. Arsenopyrite (FeAsS)

Contains arsenic and releases toxic fumes when heated or weathered.

3. Crocidolite (Blue Asbestos)

Inhalation of fibers can lead to fatal lung diseases and cancers.

4. Autunite

A radioactive uranium mineral that emits harmful radiation.

5. Galena (PbS)

Lead-rich mineral; dust or ingestion is highly toxic.

6. Stibnite (Sb₂S₃)

Antimony sulfide; toxic when ingested or inhaled.

7. Realgar (As₄S₄)

Bright red arsenic mineral, highly poisonous despite its beauty.

8. Chalcantite (CuSO₄·5H₂O)

Looks like candy, but ingestion can be fatal.

9. Torbernite

Radioactive copper uranium phosphate; unsafe without shielding.

10. Ekanite

Extremely radioactive and dangerous to handle.

Minerals shape civilizations—but respecting their chemistry is essential for survival.

#DeadlyMinerals #ToxicMinerals #Mineralogy#GeologyFacts #DangerousBeauty#EarthScience #GemEducation#-NaturalHazards #MineralAwareness

Save Gem Hill, Lonely Butte & Rock collecting in Southern California

Those who have followed this page for a while will remember the West Mojave Travel Management Plan. Years and a lot of work by both the BLM and stakeholders went into that plan. While we lost some roads, overall rockhounds did okay when the plan was finalized, gaining more open routes in the Cadys. However, extreme environmental groups were not happy that their first lawsuit resulted in more roads being open, so they sued AGAIN. A federal judge recently ruled that 2,200 miles of roads be closed as of next month. I'm glad the BLM fought the lawsuit and hope they choose to appeal.

Join me at this online meeting to learn more about the ruling and what roads will be closed.

The meeting, which is open to the public, will be held on Wednesday, February 18, 2026, from 9:00-11:00AM at the Jawbone Station Visitor Center, and available online via Zoom.

At the meeting, FOJ will present maps and information to bring attendees up to speed on the court order. We'll provide a limited number of tables and chairs for those wanting to take notes.

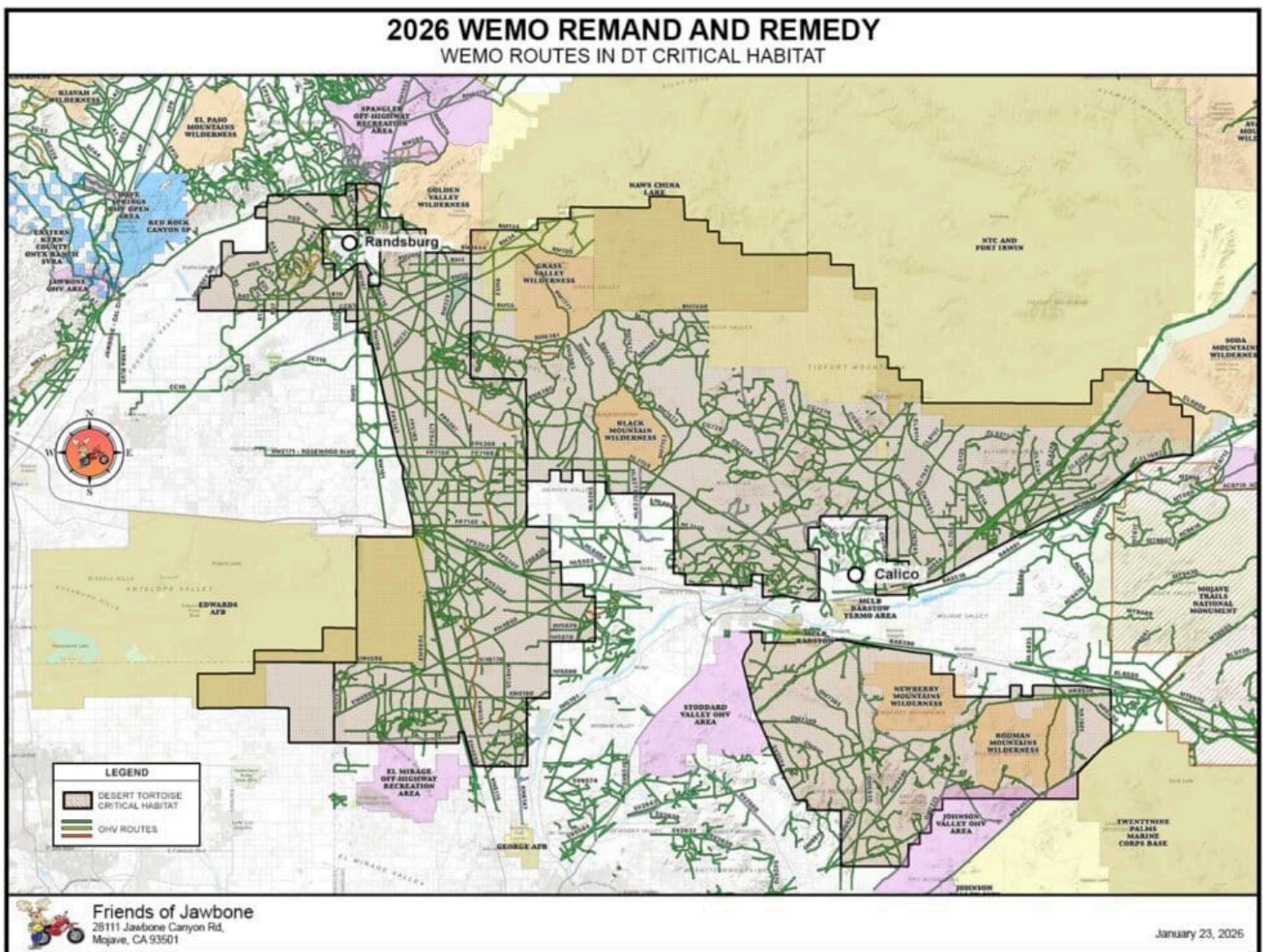
This may be the only local public meeting on this topic before the closure takes effect.

To join us via Zoom, please click here:

Friends of Jawbone Monthly Zoom Meeting

Meeting ID: 841 7294 6557

Passcode: 007631



Upcoming Local Gem and Mineral Shows

VICTOR VALLEY GEM AND MINERAL CLUB
Invites you to their
50th Annual
Stoddard Wells Rockhound Tailgate
Located in Apple Valley, CA
March 13th, 14th and 15th 2026
Fri - Sun 9 - 5 Daily
EVERYONE IS WELCOMED
All donations are gladly accepted
to help offset our expenses

Free Event
Free Vendor Spaces
Dry Camping
Restrooms On site

Silent Auctions
Grab Bags
Spin the Wheel
And More

Come visit for handcrafted and faceted jewelry, slabs and cabs, findings and equipment, minerals and fossils, tons of rough material and more.

No saving spaces, No competing with VVGMC 's fundraising activities. Food, drinks, grab bags, spin the wheel, or auctions,

Saturday Family Field Trip!
9am - 1pm
We will be collecting Tri-Color Marble
Verde Antique is less then a mile away.

Directions on back

VENTURA GEM & MINERAL SOCIETY
Presents

VENTURA GEM SHOW
GEMS • MINERALS • JEWELRY • FOSSILS

MARCH 7-8 2026
VISIT: VGMS.ORG

VENTURA FAIRGROUNDS
VENTURA, CA
SAT. (10AM TO 5PM) • SUN. (10AM TO 4PM)
FREE ADMISSION
Gems, Minerals, Rocks, Fossils, Jewelry, Exhibits
Dealers, Demonstrations, Raffles, Silent Auctions
Country Store, Plant Sales, Kids Activities

2026
Antelope Valley Gem & Mineral Club's
Gem, Mineral & Jewelry Show

Saturday, March 28, 2026 10-5
Sunday, March 29, 2026 10-4
FREE ADMISSION & \$10 PARKING


Antelope Valley Fairgrounds
2551 West Ave. H, Lancaster, CA 93536

Raffle, Silent Auction, Kid's Activities,
Demonstrations, Door Prize Drawings

Vendors with something for everyone!
Rocks-Beads-Minerals-Jewelry-Gems
Crystals-Tools-Books-Much Much More