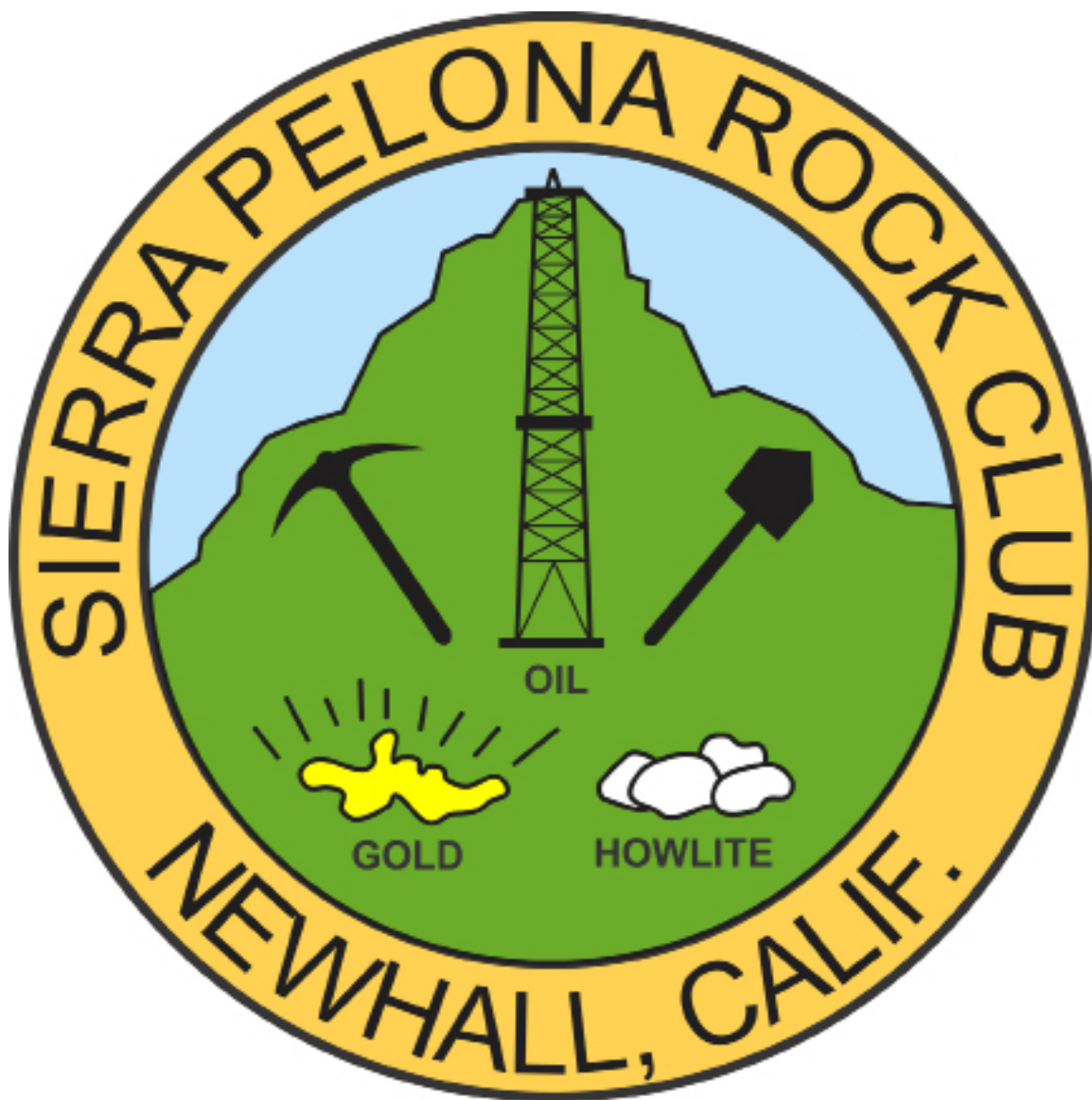


# The Sierra Pelonaogram



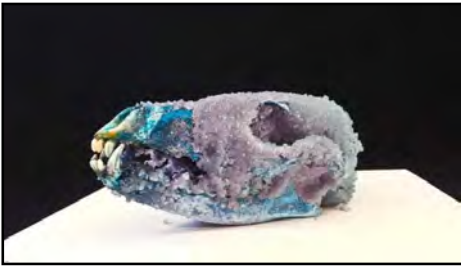
February 2024

---

*... Member of the California Federation of Mineralogical Society Inc. ...*

---

The Sierra Pelona Rock Club is a non-profit organization founded in 1959 with the objective to sponsor activities and promote interest and education in: mineralogy, lapidary, geology, paleontology and related subjects.



Crystallized coyote skull.  
Credit: longhairbearhandmade

### Crystallized Skulls--Real or Fake?

The crystal skulls are human skull hardstone carvings made of clear or milky white quartz, claimed by their alleged finders to be pre-Colombian Mesoamerican artifacts; however, these claims were refuted for all the specimens available for scientific studies.

The type of crystal was determined by examining chlorite inclusions. It is found only in Madagascar and Brazil, and therefore in pre-Columbian Mesoamerica unrecognizable or unknown. The study concluded that the skulls were made in Germany in the 19th century, most likely at workshops in the city of Idar-Oberstein, renowned in the late 19th century for crafting objects made of imported Brazilian quartz.

There are no uncommon or terribly mysterious crystal skulls. In Brazil, China, and Germany, thousands are produced each year. But a handful of these rather macabre objects have fueled intense interest and controversy for more than a century among archeologists, scientists, spiritualists, and museum officials.

In private and public collections, there may be a dozen of these rare crystal skulls. Some are crystal-clear, others are smokey quartz or colored. Some of them are of real human size and very fine detail, while others are smaller and less refined. Everyone is supposed to come from Mexico and Central America.

### All Fakes?

Moreover, recent analyzes of the British Museum and the Smithsonian Institution's electron microscope of skulls revealed markings that could only have been made using modern carving tools. Both museums estimate that their skulls date from the mid to late 1800s, a time when there was high public interest in ancient cultures and museums were eager to display pieces.

Reference: *Geology/Rocks FB*

### Welcome!

A big welcome goes out to our new members Bob and Shannon Peters with sons Aiden and Archer. They are returning members after a several-year absence.

Also, please welcome Joanne (Jo) Johnson-Dyer.



### February

Brigitte Mazourek  
Alan Pollack  
John Wheeler  
Tina White

### March

Ruth Hidalgo  
Linda Jenkins  
Joanne Johnson-Dyer  
Ed Learn  
Shannon Peters  
Maureen Thomas  
Bill Webber

### Officers:

President – Tina White  
Vice-President – Julie Tinoco  
Secretary: Maureen Thomas  
Treasurer –Ed Learn  
Federation Director (CFMS/AFMS) --Greg Mazourek

### Chairpersons:

Claim--Linda Jenkins  
Donation Rock Table--Dianne Wholleben  
Equipment--Bill Webber  
Field Trips – Julie Tinoco  
Historian -Open  
Hospitality – Heidi Webber  
Membership – Heidi Webber  
Website-- Larry Holt  
Pelonagram Publisher, Editor – Heidi Webber  
Programs –Tina White  
Publicity –Open  
Sunshine--Yolanda Resnick

The Sierra Pelona Rock Club, is a member of the California and American Federation of Mineralogical Societies, Inc. (CFMS/AFMS). The general club meetings (Open to the public) are at 7:00 PM, on the 3rd Tuesday of each month at

**The Clubhouse of the  
Greenbrier Mobile Estates EAST  
21301 Soledad Canyon Rd  
Canyon Country, CA 91351**

Contact the Club or the Sierra Pelonagram Editor at:

**Sierra Pelona Rock Club**

**P.O. Box 221256**

**Newhall, Ca. 91322**

Or e-mail: [hwebber50@gmail.com](mailto:hwebber50@gmail.com)

Visit the *SPRC website* [www.sierrapelona.com](http://www.sierrapelona.com)



### SPRC Members ~

I'm writing this on the 2nd weekend of February, when it is time to come out from under our hoods and umbrellas to enjoy the bright sunshine, short lived as it will likely be.

While rain can be dreary, we all know that Southern California need moisture. But what does it mean for rockhounding? Both good and bad:

- Good: Lots more float will be littering natural surfaces in what were dry & dusty areas!
- Bad: It's muddy, possibly up-to-your ankles muddy.

But we are hearty souls, and if you haven't yet had the chance to go out looking for beautiful and interesting rocks, I urge you to do so. And if you're not really sure about that whole mud thing, keep in mind that there are some indoor opportunities in the next few weeks. (Granted, these aren't in February, but this is a short month!)

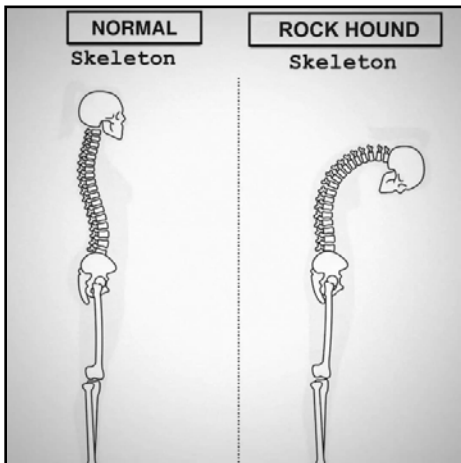
- First is the Ventura Gem & Mineral Society's show on March 2nd & 3rd at the Ventura

County Fairgrounds.

- If you're already booked those days or think being indoors isn't a real rock-related outing, check out the Victor Valley Gem & Mineral Club's 48th Annual Stoddard Wells Rockhound Tailgate near Victorville March 8th - 10th.

More information on both of these events will be found elsewhere in this Pelonagram. I hope to see you - spanking clean or smeared with mud - at one of these events!

~ Tina White, SPRC President



### SPRC BOARD Meeting Minutes

February 6, 2024

The Board meeting via Zoom was called to order at 7:04 p.m. by President Tina White

Note: Advance notice of the meeting to members is given by email.

#### Elected Officers In attendance:

- Tina White, President
- Julie Tinoco, Vice President
- Maureen Thomas, Secretary
- Ed Learn, Treasurer -ABSENT
- Greg Mazourek, Federation Director CFMS/AFMS

**Hospitality In Attendance:** Heidi Webber

#### Treasurer's Report:

- The Club is in good shape financially and able to meet its obligations.

#### Old Business:

- Registration of Claim: status unknown
- CFMS Officer Change Form: not submitted yet by Tina W. Will try again.

- Banking Account: Tina and Ed have yet to coordinate getting their names on the account.
- Membership: Heidi reports that there are only 2 outstanding dues remaining. One member left the club which leaves us with a total of 46 members. Once all dues are paid, an updated roster will be forthcoming. New members voted in are: Bob & Shannon Peters with children Aiden and Archer and Joanne Dyer.
- Business Cards: Julie has not ordered them yet, she is still working on it.
- Sales Permit: Tina will have an update for the general meeting in 2 weeks.
- Club Items in Ron R's garage: Julie can take some once she obtains her storage container which she has yet to order. This will depend upon when Ron R. is ready to empty his garage as he is not leaving on his mission until August. Other volunteers are still needed.
- Ron Lawrence's Collection: possible small rock sale at a few of our regular meetings - perhaps 10 items per meeting. Larger rocks will be worked on by Martin S. prior to a larger event with other invited clubs.
- It was voted to reimburse Martin S. for rocks he bought at Quartzite for the club once he submits an invoice.

#### New Business:

- Field Trips/Outings: due to the wet weather Julie wants to wait 2 weeks to plan something for February. In 4 to 6 weeks it may be possible to plan trips to Afton Cyn. or the Hauser Beds (3-day long trips). Ballarat may be possible in 4 to 6 weeks, Acton and Hubbard are both a possibility but all proposed trips are dependent upon the weather. Tina W. will find out about the Natural History Museum, an indoor event. Tina W. suggested we bring up the idea of indoor/outdoor field trips at the next general meeting to discover what interests members may have so a decision can be made at that time.

#### March Events

- March 2-3: Ventura Gem, Mineral, Fossil & Jewelry show.
- March 8-10: Stoddard Wells Rockhound Tailgate - Saturday family field trip 9am - 1pm to collect tri-color marble
- Flyers will be available at next General Meeting for both events.

A motion to adjourn was seconded and carried at 7:56 p.m.

Maureen Thomas, Secretary, SPRC

## SPRC Meeting Minutes

January 16, 2024

The regular meeting held at Greenbriar Mobile home Park East was called to order at 7:05 p.m. by President Tina White

Note: Advance notice of the meeting to members is given by email.

### **Elected Officers In attendance:**

Tina White, President

Julie Tinoco, Vice President

Maureen Thomas, Secretary

Ed Learn, Treasurer

Elected Officers Absent: Greg Mazourek, Federation Director CFMS/AFMS

Field Trip Coordinator: Julie Tinoco

Hospitality: Heidi Webber & Ron Rackliffe

Treasurer's Report: The Club is financially able to meet its obligations.

Note: No informational presentation this month

### **Old Business:**

- Elected 2024 Board members were named as listed above.
- Ron Rackliffe and Heidi Webber will share Hospitality duties.
- Motion to approve Minutes of the January Board meeting were passed.
- Please sign up to bring snacks to the meetings
- January 31st is the last day to pay 2024 Club dues – the amount is \$25 per person per year for adults, children are \$5 plus the cost of a badge.
- Workshop – the weather is not cooperating as our equipment for working our rocks, etc. is out in the open.

### **New Business:**

- More Club business cards are needed – Julie Tinoco will have a 1,000 made.
- Tina White cannot continue to store the Club t-shirts and hats so we need a volunteer.
- Tina White is working on obtaining a permit to sell with the State.
- Rock Club paraphernalia currently stored in Ron Rackliffe's garage needs a new home – Julie Tinoco may take this on but a volunteer is needed.
- Ron Lawrence has rocks to clear out – a live auction is a possibility.
- Heidi Webber advised that a new member roster will be available around the middle of February once all the dues are paid.
- Field Trip Ideas: Julie Tinoco advised the Quartzite Pow-Wow is currently going on in Quartzite, AZ. Let Julie know if you want to attend. The show sells rock & equipment, jewelry etc. Several good side trips in the area as well. Google QIA for website.  
Hauser bed field trip is an option for the end of January and perhaps Afton but all depends on the weather and the # of people who sign up.

Blythe at the end of February is an option.

- A vote was taken and approved for non-rock related speakers and field trips, expense permitting. Spending Club money on transportation costs (if reasonable) was suggested. Speakers on topics such as geology and gemology were suggested by Tina White. Some non-rock field trip ideas put forth were:

- LaBrea Tar Pits and the Page Museum
- Alf Museum of Paleontology in Claremont
- LA Natural History Museum gem and mineral hall
- Joshua Tree and the Salton Sea
- Box Canyon
- San Andreas fault (Devore to Lancaster segment)
- Carrizo Plain, Calico ghost town, UCLA meteorite gallery
- Cocina Quarry in Simi Valley
- Whale bone collecting at Refugio State Beach
- Thornhill Broom
- Palos Verdes Peninsula
- Owens Valley & Death Valley (overnight trips)
- Cady's Mountains
- Metal detecting (if equipment can be found)
- March 2nd & 3rd Ventura Gem & Mineral Show

- If anyone has any trip ideas please share with Tina and Julie

Drawing Winners included Ed Learn, Elff, Lise Meyers, Betsy Swallow, DJ Gervais, Janet Catmull, Janelle Williams, Julie Tinoco, Lynne Alexander and Brit Wylie.

The Silent Auction closed at 8:36 and the proceeds were paid to Ed Learn.

NOTE: Tina White advised via email that to open the gate at our meeting place (Greenbriar MH Park) press 032 at the gate keypad.

A motion to adjourn was seconded and carried at 8:38 p.m.

Maureen Thomas, Secretary, SPRC

## Obsidian



Obsidian is a natural volcanic glass that is formed as an igneous rock that is extrusive.

Obsidian is formed by rapidly cooling felsic lava extruded from a volcano with limited growth in crystals. It is commonly found in the margins of rhyolitic lava flows known as obsidian flows, where the chemical composition (high silica content) creates a high viscosity resulting in the production of natural glass from the lava after rapid cooling. This highly viscous lava's inhibition of atomic diffusion explains the lack of crystal growth. Obsidian is rough, fragile, and amorphous, with very sharp edges breaking. It was used in the past for the manufacture of cutting and slicing equipment and was used experimentally as surgical scalpel blades.

Obsidian is mineral-like, but not a true mineral because it is not crystalline as a glass; however, it is too complex to be categorized as a mineral. It is classified as a mineraloid sometimes. While obsidian is usually dark in color, similar to basalt-like mafic rocks, the composition of obsidian is extremely felsic. Obsidian mainly consists of SiO<sub>2</sub> (silicon dioxide), typically

70% or more. With a similar composition, crystalline rocks include granite and rhyolite. Because obsidian is metastable on the surface of the Earth (the glass forms fine-grained mineral crystals over time), no obsidian older than the Cretaceous period has been found. The existence of water speeds up this process of obsidian. Although the newly formed obsidian has a low water content, usually less than 1 percent by weight, it is slowly hydrated to form perlite when exposed to groundwater.

### How to Identify Obsidian?

How can you identify obsidian? The lack of a crystalline structure indicates that obsidian is not a true mineral and causes extreme sharpness of the fracture surfaces. Since prehistoric times, obsidian has been used in cutting tools and is still used today in surgical scalpels.

Explore obsidian where cooling is rapid in the margins of lava flows. Glass Buttes in central Oregon is one of the best places to find obsidian in the U.S. Pieces of fist size can be found on the surface in abundance here.

Examine the obsidian's general presence. It has a distinctive appearance of smooth glass. Obsidian is a frozen liquid that contains small amounts of mineral impurities.

See the color Because pure obsidian is usually dark, on rare occasions it may also be almost white.

Consider the effect of impurities on the obsidian color For examples, iron and magnesium may make obsidian dark green. Hematite or limonite add a red or brown color to the obsidian. A lot of microscopic rock and mineral particles usually cause the jet black color most closely associated with obsidian.

Looking at the obsidian's visual effects of small gas bubbles. It can cause the obsidian to have a gold or silver shine if the bubbles were spread almost flat.

### What does Obsidian feel like?

Obsidian has a strong conchoidal fracture and luster. It means that the top of the fracture is curving smoothly (like a seashell). Obsidian appears to be black. Minute inclusions and tiny crystals in the glass create it hue.

### What are the characteristics of obsidian?

Obsidian breaks with a typical "conchoidal" fracture, like all glass and some other forms of natural rocks. Due to the near absence of mineral crystals in the glass, this smooth, curved form of fracture surface occurs. Conchoidal fracture surface intersections may be sharper than a knife.

### What is the texture of obsidian?

Obsidian, igneous rock that occurs as a natural glass produced by the rapid refreshment of viscous volcanic lava. Obsidian is extremely silica-rich (around 65 to 80 percent), low in water, and has a rhyolite-like chemical composition. Obsidian has a luster of glass and is somewhat stronger than window glass.

Reference: Geology Page, FB



This is definitely the right time of year for different Gem and Mineral Shows. The Stoddard Wells Tailgate show hosted by the Victor Valley Gem and Mineral Club is another one set for March. This is a real fun one with a great field trip on Saturday.

VICTOR VALLEY GEM AND MINERAL CLUB  
Invites you to the  
**48<sup>th</sup> Annual**

## Stoddard Wells Rockhound Tailgate

Victorville, California

**Friday – Sunday, March 8<sup>th</sup> – 10<sup>th</sup>, 2024**  
**9:00 am to 5:00 Daily**

EVERYONE IS WELCOME

- |  |                     |
|--|---------------------|
| Free Event!                                | Free Vendor Spaces  |
| Dry Camping                                | Restrooms           |
| Lots of Rocks                              | Grab Bags           |
| Kids Games                                 | Spin the Wheel      |
| Club Gear                                  | Water, Coffee, Soda |
| Food Truck - Breakfast and Lunch Offerings |                     |

All Donations are gladly accepted to help offset expenses  
*Come Visit us for Handcrafted and faceted Jewelry, Slabs and Cabs, Findings and Equipment, Minerals and Fossils, TONS of Rough Material, and more*

*NO saving spaces, NO competing with VVGMC's fundraising activities ie: Food, drinks, spin the wheel, or auctions*

For more Information, visit our website at [vvgmc.org](http://vvgmc.org) or call 760-243-2330 and leave a message

**Saturday FAMILY Field Trip: 9am to 1pm**

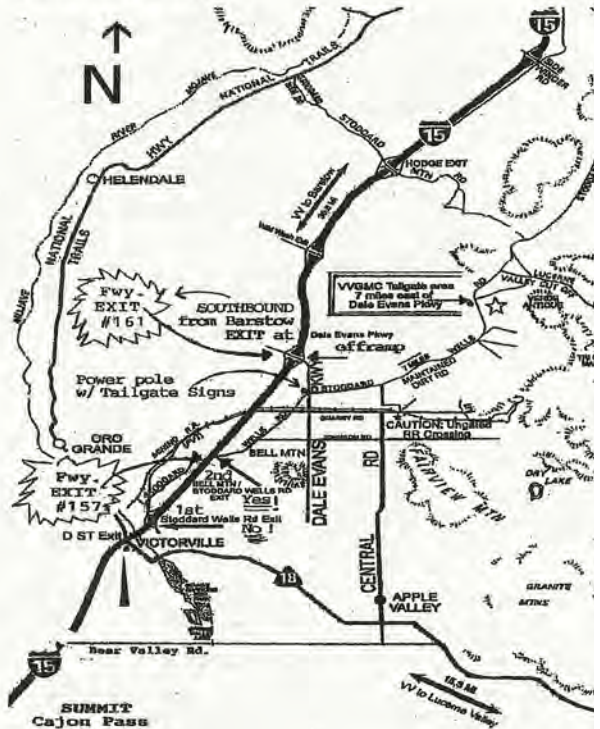
**We'll be collecting Tri-Color marble!**

**Verde Antique is less than 1 mile from the area**

**GPS 34.671852347, -117.117133037**

**Directions:** From I-15 Northbound towards Barstow : Hwy 15 North THRU Victorville EXIT Rt. At 2nd Stoddard Wells Rd at BELL Mtn. EXIT # 157 Turn Left/East at Ramp STOP Sign. STAY On Stoddard Wells Road 4 mi. until next STOP sign at Dale Evans Pkwy. "Tailgate" signs high on NW corner pole. Check Odometer here! Continue Straight On Stoddard Wells Rd. 7 mil to "Tailgate". Road becomes a graded dirt road about 4/10 mi. from the Dale Evans Pkwy intersection. Proceed East/NE past "Grange" fork to "Tailgate" site. Cars & RVs can make it w/ease & care. "Tailgate" signs along route.

RAIN OR SHINE, SEE YOU THERE!



**VENTURA GEM & MINERAL SOCIETY**

**61st Annual**  
**Gem, Mineral, Fossil & Jewelry Show**

**MARCH 2 & 3, 2024**  
**Saturday 10 - 5 • Sunday 10 - 4**

Gems & Minerals • Fossils • Jewelry  
Silent Auction • Exhibits • Dealers  
Kids' Activities • Demonstrations  
Raffle • Country Store • Plant Sale

**FREE Admission**

Ventura County Fairgrounds  
10 W. Harbor Blvd.  
Ventura, CA 93001

Visit us at [vgms.org](http://vgms.org)

Mark Lantz, the Tailgate Chairman says:

VICTOR VALLEY GEM AND MINERAL CLUB - 48th Annual Stoddard Wells Rockhound Tailgate March 8-10, 2024. Lots of family activities besides great rock collecting. Metal detecting, geode cutting, scavenger hunting, more rock collecting, pick your prize activity, gold panning, spin-the-wheel, jewelry shopping, lapidary work, and much more rock and slab collecting. A Saturday field trip to a local collecting area. Rain, Wind, or Shine (Hopefully the later) daily from 9:00 am to 5:00. For more info email me at [marklantz53@gmail.com](mailto:marklantz53@gmail.com). Please share this on your page if you could, to get the word out. Gonna be a great time!