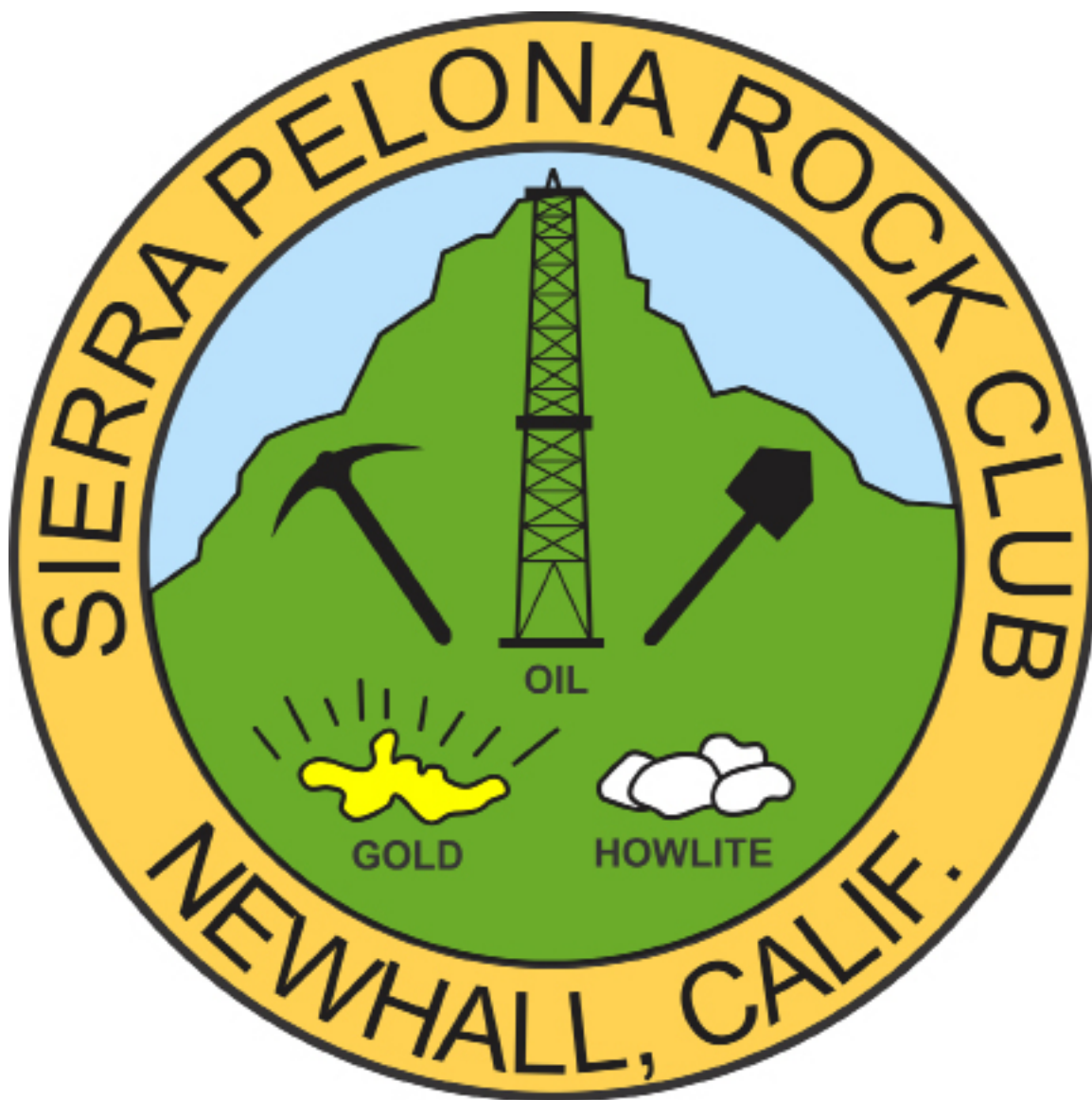


The Sierra Pelona nagram



September 2022

... Member of the California Federation of Mineralogical Society Inc. ...

The Sierra Pelona Rock Club is a non-profit organization founded in 1959 with the objective to sponsor activities and promote interest and education in: mineralogy, lapidary, geology, paleontology and related subjects.



"September 24-25, 2022 - San Luis Obispo, CA San Luis Obispo Gem and Mineral Club

San Luis Obispo Veterans Memorial Building, 801 Grand Ave., San Luis Obispo, CA
Hours both days: 10 AM - 5 PM
Contact: 2022show@alogem.org
Website: <http://www.slogem.org/show.htm>

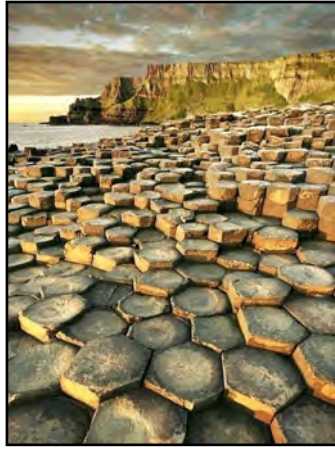
"October 8-9, 2022 - Los Altos, CA Peninsula Gem and Geology Society Los Altos, CA 94022

Hours: Saturday and Sunday 10 AM - 5 PM
Recreation with Rocks
Contact: 650 575-3144 Website: <http://pggs.org>"

"October 9, 2022 - Fallbrook, CA Fallbrook Gem and Mineral Society Fall Festival of Gems & Minerals
123 W. Alvarado Street, Fallbrook CA 92028

Hours: 9 AM-4 PM
Vendors: apply by August 1, 2022. Free booths for nonprofit organizations promoting minerals, fossils or gems.
Contact: (760) 728-1130, info@fgms.org
Website: <http://www.fgms.org>

"October 15-16, 2022 - Santa Rosa, CA Santa Rosa Mineral & Gem Society 45th Annual Mineral and Gem Show
Santa Rosa Veterans Memorial, 1351 Maple Ave., Santa Rosa, CA Hours: Saturday 10 AM -6 PM, Sunday 10 AM - 5 PM
Minerals, gems, rough rock, slabs, jewelry, beads from 30 vendors. Kids activities, gold panning, raffle, door prizes and Silent Auction. Displays, demonstrations, scavenger hunt and fluorescent minerals.
Kids under 12 are free with paid parent and there's Free Parking. Contact: (707) 849-9551, jolene4srmgs@gmail.com
Website: <http://SRMGS.org>"



The Giant's Causeway

The Giant's Causeway is an area of about 40,000 interlocking basalt columns, the result of an ancient volcanic eruption. It is located in County Antrim on the north coast of Northern Ireland.



September

Cheryl Cogan
Jenn Jenkins
Margaret Stamboulian
Julie Tinoco

October

Omid Aeen
Natasha Illa'
Jack Jenkins
Ashton Scott

Officers:

President – Bill Webber
Vice-President – Julie Tinoco
Secretary: Tina White
Treasurer –Shana Bruner-Ruiz
Federation Director (CFMS/AFMS) --Don Cogan

Chairpersons:

Claim--Linda Jenkins
Donation Rock Table--Dianne Wholleben
Equipment--Bill Webber
Field Trips – Julie Tinoco
Historian -Open
Hospitality – Ron Rackliffe
Membership – Heidi Webber
Website-- Larry Holt
Pelonagram Publisher, Editor – Heidi Webber
Programs –Tina White
Publicity –Open
Sunshine--Linda Jenkins

The Sierra Pelona Rock Club, is a member of the California and American Federation of Mineralogical Societies, Inc. (CFMS/AFMS). The general club meetings (Open to the public) are at 7:30 PM, on the 3rd Tuesday of each month at: Currently via Zoom

Contact the Club or the Sierra Pelonagram Editor at:
Sierra Pelona Rock Club
P.O. Box 221256
Newhall, Ca. 91322
Or e-mail: hwebber50@gmail.com
Visit the SPRC website www.sierrapelona.com

President's Message



Well, that went by fast! It seemed like such a long hot summer, it's hard to believe September is here already and everyone's fall duties are back in full force.

As a club, we have a lot going on. Two of the most important things are finishing up the details for our new meeting room which we sincerely hope will be done in time for our October meeting (you will know—watch for fireworks!), and setting up a table to sell goodies at Gilchrist Farms. It's been a couple of years since we have been able to do any sort of fund-raising outside the club, so this is important and we will need people to work the tables—hopefully for 3 days. Heidi is contacting Gilchrist to see what we can do and an announcement will be made as soon as we know.

Julie has a great field trip planned to a new collecting spot, so wait for her announcement.

We had a really nice evening at Oggie's for our summer club dinner. We had an entire section of the room blocked off just for the 25 of us. They have expanded their menu and everyone got something they liked even if it wasn't pizza. It was so nice to see everyone and the laughter and chatter went on for a couple hours. In fact, not a single one of us thought to pull out our phone and take a picture until the end when there were only a couple of us left. Oh well, you'll have to take our word on it.

It is also getting to be that time of year when dues are due and elections are coming up. Please think about becoming a board member. We have all been on the board for years and we really need to get new people with fresh ideas. We will need a new treasurer as Shana has said she doesn't want to do it any longer. None of the positions are difficult and you will always have someone to help you if needed.

That's it for now, I hope to see you at the Zoom meeting next week. And hopefully it will be our last Zoom meeting.

Bill Webber
President, SPRC



SPRC Board Meeting

September 6, 2022

Zoom

The meeting was called to order at 7:30pm. In attendance were Don Cogan, Bill and Heidi Webber, Ron Rackliffe and Julie Tinoco. Shana Bruner-Ruiz and Tina White were unable to attend. A quorum was met.

Workshop: The next workshop will be Saturday, October 1 from 10-3. As usual, Heidi will provide lunch for \$5. This workshop is for club members only.

Field Trip: Julie Tinoco will be leading the group to a spot in Palos Verdes on September 17. She found Glaucofane and Barite and Dolomite on her scouting trip. She will email the club members as the date gets closer. The next trip will be October 15, where TBD.

CFMS: Don said he had no updates as the summer was taken off as usual.

Claim Paperwork: The claim paperwork to the BLM has been paid. Bill and Heidi will need to take a trip to Bakersfield to the county assessor's office to pay Kern County assessments (and for them to show how to figure it out online as the clerks are unable to assist over the phone).

Meeting Room: We are very close to being able to meet in person again. We are in the final stages of getting paperwork and insurance needs met. Fingers crossed for October. An announcement will be made as soon as it is final.

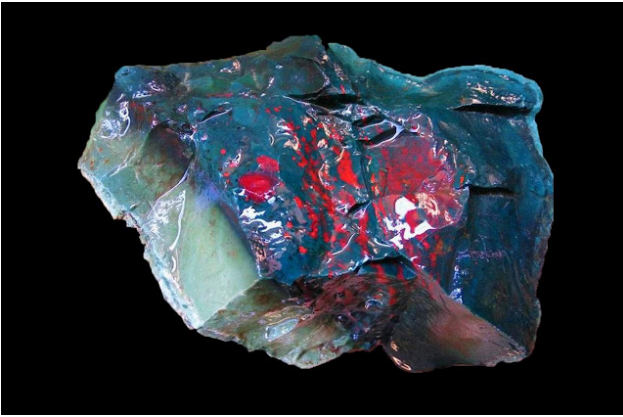
Gilchrist Farms: Heidi will call to make arrangements for us to set up a table to sell goods. We would like to do this on October 22-23 and again on the 29th. The Webbers have tables and the club EZ-Up. Again, an announcement will be made when plans are firmed up. We will need people to work the tables. This will be our only fund-raiser so this is an important few days.

Heidi reported that the club summer dinner at Oggie's was well-attended. Twenty-five of us met, ate and visited with each other. Unfortunately, we all were having such a great time, no one thought to take a photo until most of us had gone.

The meeting was adjourned at 8:12. Don/Julie

Respectfully Submitted
Heidi S Webber for Tina White

Bloodstone



*A heliotrope, also known as a bloodstone.
Photo: Chille Maulidhaa*

Bloodstone is an opaque, dark-green Chalcedony with red spots. An old name still used in Europe is heliotrope (Greek - sun turner). Used often as seals for men's rings and for other ornamental objects. The mineral aggregate heliotrope is a variety of jasper or chalcedony (which is a cryptocrystalline mixture of quartz).

The red inclusions are supposed to resemble spots of blood; hence the name "bloodstone". The name "heliotrope" derives from various ancient notions about the manner in which the mineral reflects light.

Bloodstone is a cryptocrystalline quartz. It inherits from that a conchoidal fracture and a hardness of approximately 6.7-7 on the Mohs hardness scale.

Bloodstone (Heliotrope) may be classified as a Jasper or Chalcedony variety of Quartz, and is usually a combination of the two. It is typically defined as a dark green Chalcedony with blood-like spots of Red Jasper or iron oxide inclusions.

It occurs as massive formations, ranging from dark green to greenish-blue or greenish-black, and may be translucent to opaque with a waxy, resinous luster. In addition to the spots and streaks of Red Jasper, some formations contain inclusions that are yellow or white, while others lacking inclusions may be entirely green. Bloodstone has been referred to as Blood Jasper and specimens with only yellow inclusions have been called Plasma.

In the ancient world it was considered to be a semi-precious stone or gem, and was used extensively as signet seals and in jewelry, as well as being carved into decorative cups, small vases and statuettes.

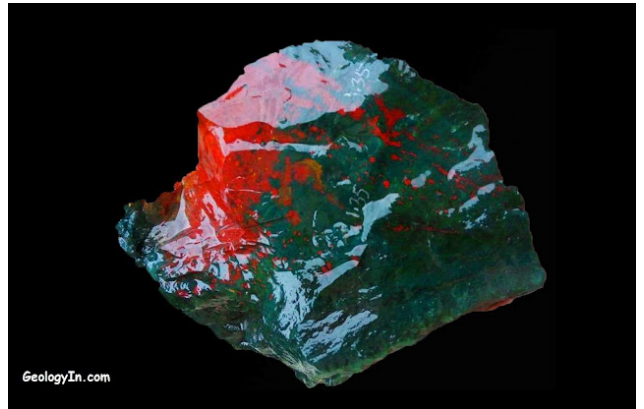


Photo: Chille Maulidhaa